

# BALANCING ACT

## Dual Monitor Arm



### Grey Silver

Bolt-Thru Base:  
5102-BALA-OBT2G

Clamp Base:  
5102-BALA-OCM2G

---

### LIST PRICE

\$755

---

### Finish

Powder Coat: Grey Silver

### Details

---

- Organic, graceful form
- Option of clamp or bolt-thru mounting base
- Integrated cable management
- Dynamic motion technology for perfect movement and balance
- Quick release VESA plate
- Rotation limiter, dynamic motion technology
- Sliders available for use with large monitors
- Rotate monitor for landscape or portrait view

#### Arm

Height: 18.62" fully extended  
Width: 33.35"  
Depth: 20.12" fully extended

#### Base

Base Width: 5.93"  
Base Depth: 5.12"

#### Extended Arm Reach From Desk Edge

20.11"

#### Vertical Arm Adjustment Range

9.92"

#### Monitor Pivot Range

Tilt +/80°, Swivel +/90°,  
360° Monitor Rotation with  
180° stop lock adjustment

#### Monitor Weight Supported

6-19.8 lbs each arm

#### Monitor Size Supported

Up to 32" without additional slider

#### VESA Compliant

75mm, 100mm

#### Shipping Box

20" x 14.2" x 6.7"

#### Shipping Product Weight

16.06 lbs

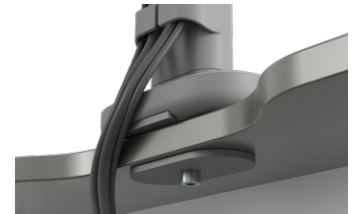
#### Product Warranty

12 Years

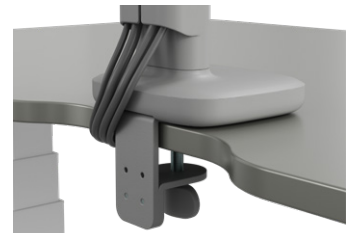
#### Product Certificates and Testing Standards

Intertek Clean Air Gold  
BIFMA Compliant  
BIFMA X5.5

Form Furniture ©2023 All Rights Reserved.



Bolt-Thru Base



Clamp Base