

BALANCING ACT

Dual Monitor Arm



Perfect White

Bolt-Thru Base:
5102-BALA-OBT2W

Clamp Base:
5102-BALA-OCM2W

LIST PRICE

\$770

Finish

Powder Coat: Perfect White

Details

- Organic, graceful form
- Option of clamp or bolt-thru mounting base
- Integrated cable management
- Dynamic motion technology for perfect movement and balance
- Quick release VESA plate
- Rotation limiter, dynamic motion technology
- Sliders available for use with large monitors
- Rotate monitor for landscape or portrait view

Arm

Height: 18.62" fully extended
Width: 33.35"
Depth: 20.12" fully extended

Base

Base Width: 5.93"
Base Depth: 5.12"

Extended Arm Reach From Desk Edge

20.11"

Vertical Arm Adjustment Range

9.92"

Monitor Pivot Range

Tilt $\pm 80^\circ$, Swivel $\pm 90^\circ$,
360° Monitor Rotation with
180° stop lock adjustment

Monitor Weight Supported

6-19.8 lbs each arm

Monitor Size Supported

Up to 32" without additional slider

VESA Compliant

75mm, 100mm

Shipping Box

20" x 14.2" x 6.7"

Shipping Product Weight

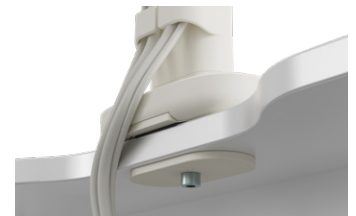
16.06 lbs

Product Warranty

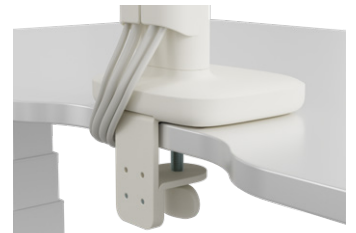
12 Years

Product Certificates and Testing Standards

Intertek Clean Air Gold
BIFMA Compliant
BIFMA X5.5



Bolt-Thru Base



Clamp Base

Form Furniture ©2023 All Rights Reserved.