

PRICING



October 2024

form

FURNITURE MADE SIMPLE®

PRODUCTS & PRICES

Furniture shouldn't be complicated. At Form, we believe every product, operation, design, and interaction should be simple. We live at the intersection of great prices, quick lead times, high quality, and beautiful design.

Form: Furniture made simple.

PRICE GUIDE

Seating	4
At Work	
Task Chair with Headrest	4
Mesh Task Chair	5
On Board	
High Back Conference Chair	6
Mid Back Conference Chair	7
Tables	8
New Heights	
Table Kits	8
Table Bases	9
Clean Slate	
Powder Coat Worktops	11
Laminate Worktops	12
Cable Caddy	13
Storage	14
Stash	
Cart	14
Drawer	15
Tower	16
Felt Pads	17
Monitor Arms	18
Balancing Act	
Single Monitor Arm	18
Dual Monitor Arm	19
Slider	20
General	21
Finish Library	21
Care and Maintenance	23
Product Testing and Sustainability	24
Terms and Conditions	26

AT WORK

Task Chair with Headrest



Black
1101-ATWO-00BPP

LIST PRICE
\$1,300

Finishes

Back: Black Woven
Seat: Black Woven
Frame: Black
Base: Polished Aluminum



Black Micro Leather
1101-ATWO-0BBPP

LIST PRICE
\$1,300

Finishes

Back: Black Micro Leather
Seat: Black Micro Leather
Frame: Polished Aluminum
Base: Polished Aluminum

Details

- Height adjustable with synchronized reclining mechanism
- Tension control with multiple locking positions
- 4D armrest
- Arm support with height and width adjustment
- Adjustable seat depth
- High density molded foam seat and back cushion
- Available with locking casters

Chair
Chair Height: 48.6"-52.55"
Chair Width: 24.61"-26.57"
Chair Depth: 21.26"-23.62"
Chair Base Diameter: 25.38"

Seat
Seat Height: 16.53"-21.56"
Seat Width: 19.25" (cushion)
Seat Depth: 18.5"-21"

Arm
Arm Height: 24.41"-27.56"
Arm Arm Width: 3.25"
Inside Arm Width: 18.75"-20.75"
Inside Arm Width: 18.75"-20.75"

Seat/Back
High Density Molded Foam

Gas Lift
KGS Class 4

Mechanism
Donati Synchronized

Weight Capacity
300 lbs

Shipping Box
37.8" x 13" x 25.2"

Shipping Weight
47.5 lbs

Product Warranty
12 years components
5 years on textiles

Product Certificates and Testing Standards
GREENGUARD Gold
BIFMA Compliant
ANSI/BIFMA X5.1-2017

Form Furniture ©2023 All Rights Reserved.

AT WORK

Mesh Task Chair



Grey with Polished Base
1102-ATWO-0GGWP

LIST PRICE
\$1,100

Finishes

Back: Grey Mesh
Seat: Grey Woven
Frame: White
Base: Polished Aluminum



Grey and Black Woven
1102-ATWO-0BGBB

LIST PRICE
\$1,025

Finishes

Back: Grey Mesh
Seat: Black Woven
Frame: Black
Base: Black



Grey and Black Micro-Leather
1102-ATWO-0AGBB

LIST PRICE
\$1,050

Finishes

Back: Grey Mesh
Seat: Black Micro-Leather
Frame: Black
Base: Black



Black with Black Base
1102-ATWO-0BBBB

LIST PRICE
\$1,025

Finishes

Back: Black Mesh
Seat: Black Woven
Frame: Black
Base: Black



Black with Polished Base
1102-ATWO-0BBBP

LIST PRICE
\$1,050

Finishes

Back: Black Mesh
Seat: Black Woven
Frame: Black
Base: Polished Aluminum

Details

- Height adjustable, ergonomic task chair with synchronized reclining mechanism
- Tension control with multiple locking positions
- 4D arm rest
- Arm support with height and width adjustment
- Adjustable seat depth
- Breathable mesh back
- Adjustable lumbar support
- Available with locking casters

Chair

Chair Height: 40.5"-44.5"
Chair Width: 24.61"-26.57"
Chair Depth: 21.26"-23.62"
Chair Base Diameter: 25.38"

Seat

Seat Height: 16.53"-21.56"
Seat Width: 19.25" (cushion)
Seat Depth: 18.5"-21"

Arm

Arm Height: 7.87"-11.02"
Arm Width: 3.25"
Inside Arm Width: 18.75"-20.75"
Arm Length: 9"

Back

Breathable woven mesh

Seat

High density molded foam

Gas Lift

KGS Class 4

Mechanism

Donati Synchronized

Weight Capacity

300 lbs

Shipping Box

30.31" x 14.17" x 25.59"

Shipping Weight

41.22 lbs

Product Warranty

12 years components
5 years on textiles

Product Certificates and Testing Standards

GREENGUARD Gold
BIFMA Compliant
ANSI/BIFMA X5.1-2017

Form Furniture ©2023 All Rights Reserved.

ON BOARD

High Back Conference Chair



Grey-Beige
1302-ONBO-0CCPP

LIST PRICE
\$1,935

Finishes
Upholstery:
Grey-Beige Micro-Leather
Frame and Base:
Polished Aluminum



Brown
1302-ONBO-0NNPP

LIST PRICE
\$1,935

Finishes
Upholstery:
Brown Micro-Leather
Frame and Base:
Polished Aluminum



Grey-Brown
1302-ONBO-0IIPP

LIST PRICE
\$1,935

Finishes
Upholstery:
Grey-Brown Micro-Leather
Frame and Base:
Polished Aluminum



Graphite
1302-ONBO-0GGPP

LIST PRICE
\$1,935

Finishes
Upholstery:
Graphite Micro-Leather
Frame and Base:
Polished Aluminum

Details

- Height adjustable with synchronized reclining mechanism
- Fixed aluminum arms
- Durable microfiber leather textile
- Adjustable seat depth
- Tension control with multiple locking positions

Chair
Chair Height: 44.29"-46.85"
Chair Width: 23.82"
Chair Depth: 23.43"
Chair Base Diameter: 25.38"

Seat
Seat Height: 16.9"-21.26"
Seat Width: 19.75" (cushion)
Seat Depth: 18.5"-20"

Arm
Arm Height: 7.54"
Inside Arm Width: 21.26"
Arm Length: 10.25"

Seat/Back
High density molded foam

Gas Lift
KGS Class 4

Mechanism
Bock syncro-tilt mech

Weight Capacity
300 lbs

Shipping Box
38" x 25.2" x 18.5"

Shipping Weight
60 lbs

Product Warranty
12 years components
5 years on textiles

Product Certificates and Testing Standards
GREENGUARD Gold
BIFMA Compliant
ANSI/BIFMA X5.1-2017

Form Furniture ©2023 All Rights Reserved.

ON BOARD

Mid Back Conference Chair



Grey-Beige
1301-ONBO-0CCPP

LIST PRICE
\$1,850

Finishes
Upholstery:
Grey-Beige Micro-Leather
Frame and Base:
Polished Aluminum



Brown
1301-ONBO-0NNPP

LIST PRICE
\$1,850

Finishes
Upholstery:
Brown Micro-Leather
Frame and Base:
Polished Aluminum



Grey-Brown
1301-ONBO-0IIPP

LIST PRICE
\$1,850

Finishes
Upholstery:
Grey-Brown Micro-Leather
Frame and Base:
Polished Aluminum



Graphite
1301-ONBO-0GGPP

LIST PRICE
\$1,850

Finishes
Upholstery:
Graphite Micro-Leather
Frame and Base:
Polished Aluminum

Details

- Height adjustable with synchronized reclining mechanism
- Fixed aluminum arms
- Durable microfiber leather textile
- Adjustable seat depth
- Tension control with multiple locking positions

Chair
Chair Height: 44.29"-46.85"
Chair Width: 23.82"
Chair Depth: 23.43"
Chair Base Diameter: 25.38"

Seat
Seat Height: 16.9"-21.26"
Seat Width: 19.75" (cushion)
Seat Depth: 18.5"-20"

Arm
Arm Height: 7.54"
Inside Arm Width: 21.26"
Arm Length: 10.25"

Seat/Back
High density molded foam

Gas Lift
KGS Class 4

Mechanism
Bock syncro-tilt mech

Weight Capacity
300 lbs

Shipping Box
32.7" x 26" x 17.3"

Shipping Weight
53.68 lbs

Product Warranty
12 years components
5 years on textiles

Product Certificates and Testing Standards
GREENGUARD Gold
BIFMA Compliant
ANSI/BIFMA X5.1-2017

Form Furniture ©2023 All Rights Reserved.

NEW HEIGHTS

Table Kits



**Perfect White Worktop
With Grey Silver Table Base**
2002-NEWH-SW306

LIST PRICE

\$1,785

Finishes

Powder Coat Worktop:
Perfect White
Powder Coat Table Base:
Grey Silver



**Walnut Worktop
With Perfect White Table Base**
2001-NEWH-WU306

LIST PRICE

\$1,825

Finishes

Laminate Worktop:
Walnut
Powder Coat Table Base:
Perfect White



**Grey Elm Worktop
With Graphite Table Base**
2001-NEWH-BY306

LIST PRICE

\$1,825

Finishes

Laminate Worktop:
Grey Elm
Powder Coat Table Base:
Graphite

Details

Worktop:

- Features premium eco-friendly substrates with no added formaldehydes
- Comfort edge on powder coat finish worktops
- Laminate tops feature non-toxic adhesive
- FSC certified substrates
- Sustainable, smooth, and durable finish
- Quickship kits available for orders of 10 or less

Adjustable Base:

- Light weight
- Pre-assembled components for easy installation
- 240 lb lifting capacity
- Adjustable width: 39/38-70.87"
- Adjustable height: 23-48.66"
- Expandable for 48-72" wide table tops and can accommodate 24" or 30" depths
- Manufactured in Europe using renewable electricity from sustainable energy sources
- Anti-collision technology
- Three-stage, C-leg configuration
- Simple, easy to use controls

Table

Height: 24.4"-50.00"
Width: 60"
Depth: 30"

Standard Height Range

23"-48.66"

Speed

1.3" per second

Weight Capacity

240 lbs (120 lbs/leg)

Product Weight

Table Base: 55.11 lbs

Shipping Product Weight

Worktop: 34.3 lbs

Table Base: 62 lbs

Worktop Warranty

5 Years

Table Base Warranty

10 years

5 years for handset and electronics

Product Certificates and Testing Standards

SCS Indoor Advantage Gold
Intertek Clean Air Gold
BIFMA Compliant
BIFMA x5.5- 2021
ANSI BIFMA e3 2019
(sect 7.6.1,7.6.2,7.6.3)
UL962 certified
EN-527 certified

Form Furniture ©2023 All Rights Reserved.

NEW HEIGHTS

Table Base



Perfect White
2101-NEWH-CL30W

LIST PRICE
\$1,100

Finish
Powder Coat: Perfect White



Grey Silver
2101-NEWH-CL30G

LIST PRICE
\$1,100

Finish
Powder Coat: Grey Silver



Warm Silver
2101-NEWH-CL30A

LIST PRICE
\$1,100

Finish
Powder Coat: Warm Silver



Graphite
2101-NEWH-CL30C

LIST PRICE
\$1,100

Finish
Powder Coat: Graphite

Details

- Light weight
- Pre-assembled components for easy installation
- 240 lb lifting capacity
- Adjustable width: 39/38-70.87"
- Adjustable height: 23-48.66"
- Expandable for 48-72" wide table tops and can accommodate 24" or 30" depths
- Manufactured in Europe using renewable electricity from sustainable energy sources
- Anti-collision technology
- Three-stage, C-leg configuration
- Simple, easy to use controls
- Optional memory handset controls

Table Base
Height: 24.4" - 50"
Width (frame): 41" - 59.5"
Depth: 23.6" or 27.56"

Table Tops Supported
27.56" stocked
Width: 48"-72"
Depth: 24" or 30"

Product Material
Powder coated steel

Speed
1.3" per second

Weight Capacity
240 lbs (120 lbs/leg)

Product Weight
55.11 lbs

Shipping Box
45" x 11.5" x 7"

Shipping Product Weight
62 lbs

Product Warranty
10 years
5 years for handset and electronics

Product Certificates and Testing Standards
SCS Indoor Advantage Gold
Intertek Clean Air Gold
BIFMA Compliant
BIFMA x5.5- 2021
ANSI BIFMA e3 2019
(sect 7.6.1,7.6.2,7.6.3)
UL962 certified
EN-527 certified

Form Furniture ©2023 All Rights Reserved.

NEW HEIGHTS CLASSIC

Table Base



Classic White – 24"
2102-NEWH-T24CW



Classic Silver – 24"
2102-NEWH-T24CB



Classic Black – 24"
2102-NEWH-T24CS



Classic White – 30"
2102-NEWH-T30CW



Classic Silver – 30"
2102-NEWH-T30CB



Classic Black – 30"
2102-NEWH-T30CS

LIST PRICE
\$1,100

Finish
Powder Coat: Classic White

LIST PRICE
\$1,100

Finish
Powder Coat: Classic Silver

LIST PRICE
\$1,100

Finish
Powder Coat: Classic Black

Details

- Light weight
- Easy installation
- 220 lb lifting capacity
- Three stage, T-Leg configuration
- Memory Controller option only
- 24" and 30" deep options available
- Quickship / In stock
- Expandable for 48"-72" wide table tops
- Anti-collision technology

Table Base
Height: 22.9" - 49"
Width (frame): 40.7" - 68.3"
Depth: 20.6"

Table Tops Supported
27.56" stocked
Width: 41"-72.3"
Depth: 24"-30"

Product Material
Powder coated steel

Speed
1.42" per second

Weight Capacity
220 lbs (120 lbs/leg)

Shipping Box
42.9" x 18.3" x 7.7"

Shipping Product Weight
70 lbs

Product Certificates and Testing Standards
Intertek Clean Air Gold
BIFMA Compliant

Product Warranty
10 years
5 years for handset and electronics

Form Furniture ©2023 All Rights Reserved.

CLEAN SLATE

Powder Coat Worktops with Comfort Edge



Perfect White
2202-CLEA-3060W

LIST PRICE
\$685

Finish
Powder Coat: Perfect White

Grey-Beige
2202-CLEA-3060I

LIST PRICE
\$685

Finish
Powder Coat: Grey-Beige

Details

- Features premium eco-friendly substrates with no added formaldehydes
- Comfort edge on powder coat finish worktops
- Sustainable, smooth, and durable finish

Worktop*
Width: 60"
Depth: 30"
Thickness: 1" nominal (0.83")

Additional Sizes Available*
30" x 60", 66", & 72"
24" x 60", 66", & 72"

*Nominal dimensions shown

Shipping Product Weight
34.3 lbs

Product Warranty
5 Years

Product Certificates and Testing Standards
SCS Indoor Advantage Gold (POWDER COAT FINISH)
Intertek Clean Air Gold
BIFMA Compliant

Form Furniture ©2023 All Rights Reserved.

CLEAN SLATE

Laminate Worktops



Grey Elm
2201-CLEA-3060Y

LIST PRICE
\$725

Finish
Laminate: Grey Elm



Walnut
2201-CLEA-3060U

LIST PRICE
\$725

Finish
Laminate: Walnut



Graphite Ash
2201-CLEA-3060T

LIST PRICE
\$725

Finish
Laminate: Graphite Ash

Details

- Features premium eco-friendly substrates with no added formaldehydes
- Laminate tops feature non-toxic adhesive
- Sustainable, smooth, and durable finish

Worktop*
Width: 60"
Depth: 30"
Thickness: 1" nominal (0.83")

Additional Sizes Available*
30" x 60", 66", & 72"
24" x 60", 66", & 72"

*Nominal dimensions shown

Shipping Product Weight
34.3 lbs

Product Warranty
5 Years

Product Certificates and Testing Standards
Intertek Clean Air Gold
BIFMA Compliant

Form Furniture ©2023 All Rights Reserved.

CLEAN SLATE

Cable Caddy



Grey
6101-CABL-0000G

LIST PRICE
\$165

Finish
Grey Mesh



Black
6101-CABL-0000B

LIST PRICE
\$165

Finish
Black Mesh

Details

- Organizes cable clutter and removes tripping hazards
- Unfolds for easy access to cables
- Six straps keep cords in place when adjusting your desk
- Easy installation with 2 brackets and mounting template included

Cable Caddy
Length: 37.4"
Width: 4"
Height: 4.25"

Weight Capacity
15 lbs

Shipping Product Weight
2.25 lbs

Shipping Box Size
40" x 5" x 1.25"

Product Warranty
5 Years

Form Furniture ©2024 All Rights Reserved.

STASH

Cart



Perfect White
3101-STAS-00LHW

Grey-Beige
3101-STAS-00LHI

Grey-Green
3101-STAS-00LHE

Red-Brown
3101-STAS-00LHR

Graphite
3101-STAS-00LHG

LIST PRICE
\$845

LIST PRICE
\$845

LIST PRICE
\$845

LIST PRICE
\$845

LIST PRICE
\$845

Finish
Powder Coat:
Perfect White

Finish
Powder Coat:
Grey-Beige

Finish
Powder Coat:
Grey-Green

Finish
Powder Coat:
Red-Brown

Finish
Powder Coat:
Graphite

Details

- Organic, graceful design
- Powder coated steel
- Lockable casters
- Handle
- 1" matching hook included
- Optional Seat Pad available in Grey and Graphite

Cart
Cart Height: 19.05"
Cart Width: 16"
Cart Depth: 18"

Opening Height
14.32"

Steel Gauge
1.5mm

Shipping Box
21.3" x 15" x 21"

Shipping Product Weight
34 lbs

Product Warranty
5 Years

Product Certificates and Testing Standards
Intertek Clean Air Gold
BIFMA Compliant
BIFMA x5.9-2021

Form Furniture ©2023 All Rights Reserved.
Patent pending.



STASH

Drawer



Perfect White
3102-STAS-00LHW

Grey-Beige
3102-STAS-00LHI

Grey-Green
3102-STAS-00LHE

Red-Brown
3102-STAS-00LHR

Graphite
3102-STAS-00LHG

LIST PRICE
\$875

LIST PRICE
\$875

LIST PRICE
\$875

LIST PRICE
\$875

LIST PRICE
\$875

Finish
Powder Coat:
Perfect White

Finish
Powder Coat:
Grey-Beige

Finish
Powder Coat:
Grey-Green

Finish
Powder Coat:
Red-Brown

Finish
Powder Coat:
Graphite

Details

- Organic, graceful design
- Powder coated steel
- Lockable casters
- Drawer
- 1" Matching hook included
- Optional Seat Pad available in Grey and Graphite

Cart
Cart Height: 19.05"
Cart Width: 12"
Cart Depth: 18"

Drawer
Drawer Height: 4"

Opening Height
11.46"

Steel Gauge
1.5mm

Shipping Box
21.26" x 19.29" x 20.86"

Shipping Product Weight
33 lbs

Product Warranty
5 Years

Product Certificates and Testing Standards
Intertek Clean Air Gold
BIFMA Compliant
BIFMA x5.9-2021

Form Furniture ©2023 All Rights Reserved.
Patent pending.



STASH

Tower



Perfect White
3103-STAS-00LHW

Grey-Beige
3103-STAS-00LHI

Grey-Green
3103-STAS-00LHE

Red-Brown
3103-STAS-00LHR

Graphite
3103-STAS-00LHG

LIST PRICE
\$1,235

LIST PRICE
\$1,235

LIST PRICE
\$1,235

LIST PRICE
\$1,235

LIST PRICE
\$1,235

Finish
Powder Coat:
Perfect White

Finish
Powder Coat:
Grey-Beige

Finish
Powder Coat:
Grey-Green

Finish
Powder Coat:
Red-Brown

Finish
Powder Coat:
Graphite

Details

- Organic, graceful design
- Powder coated steel
- Lockable casters
- Handle
- Three shelves
- Range of functional accessories available

Cart
Cart Height: 36"
Cart Width: 14"
Cart Depth: 20"

Shelves
Large Opening Height: 12.25"
Small Opening Height: 6"

Steel Gauge
1.5mm

Shipping Box
23.24" x 16.93" x 37.80"

Shipping Product Weight
61.62 lbs

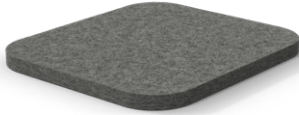
Product Warranty
5 Years

**Product Certificates
and Testing Standards**
Intertek Clean Air Gold
BIFMA Compliant
BIFMA x5.9-2021

Form Furniture ©2023 All Rights Reserved.
Patent pending.

STASH

Seat Pad



Cart – Grey
3202-STAS-00FPC

Cart – Graphite
3202-STAS-00FPG

Drawer – Grey
3203-STAS-00FPC

Drawer – Graphite
3203-STAS-00FPG

LIST PRICE
\$135

LIST PRICE
\$135

LIST PRICE
\$115

LIST PRICE
\$115

Finish
Grey Felt

Finish
Graphite Felt

Finish
Grey Felt

Finish
Graphite Felt

Details

Cart Seat Pad
Width: 15.88"
Depth: 17.88"
Thickness: 1" (24mm)

Drawer Seat Pad
Width: 11.75"
Depth: 17.79"
Thickness: 1" (24mm)

Material Composition
100% polyester (PET)

Density
0.75 lb/ft² (3.6 kg/m²)

Flammability and Testing Certifications
ASTM-E84
Class A classification
AS ISO 9705-2003
group 1 classification

Form Furniture ©2023 All Rights Reserved.
Patent pending.



BALANCING ACT

Single Monitor Arm



Perfect White

Bolt-Thru Base:
5101-BALA-0BT1W

Clamp Base:
5101-BALA-0CM1W

LIST PRICE

\$450

Finish

Powder Coat: Perfect White



Grey Silver

Bolt-Thru Base:
5101-BALA-0BT1G

Clamp Base:
5101-BALA-0CM1G

LIST PRICE

\$435

Finish

Powder Coat: Grey Silver



Classic Black

Bolt-Thru Base:
5101-BALA-0BT1B

Clamp Base:
5101-BALA-0CM1B

LIST PRICE

\$435

Finish

Powder Coat: Classic Black

Details

- Organic, graceful form
- Option of clamp or bolt-thru mounting base
- Integrated cable management
- Dynamic motion technology for perfect movement and balance
- Quick release VESA plate
- Rotation limiter, dynamic motion technology
- Sliders available for use with large monitors
- Rotate monitor for landscape or portrait view

Arm

Height: 18.62" fully extended
Depth: 20.12" fully extended
Base Width and Depth: 5.12"

Extended Arm Reach From Desk Edge

20.11"

Vertical Arm Adjustment Range

9.92"

Monitor Pivot Range

Tilt +/80°
Swivel +/90°
360° Monitor Rotation with
180° stop lock adjustment

Monitor Weight Supported

6–19.8 lbs

VESA Compliant

75mm, 100mm

Shipping Box

20" x 14.2" x 6.7"

Shipping Product Weight

11.22 lbs

Product Warranty

12 Years

Product Certificates and Testing Standards

Intertek Clean Air Gold
BIFMA Compliant
BIFMA X5.5

Form Furniture ©2023 All Rights Reserved.



Bolt-Thru Base



Clamp Base

BALANCING ACT

Dual Monitor Arm



Perfect White

Bolt-Thru Base:
5102-BALA-OBT2W

Clamp Base:
5102-BALA-OCM2W

LIST PRICE

\$770

Finish

Powder Coat: Perfect White



Grey Silver

Bolt-Thru Base:
5102-BALA-OBT2G

Clamp Base:
5102-BALA-OCM2G

LIST PRICE

\$755

Finish

Powder Coat: Grey Silver



Classic Black

Bolt-Thru Base:
5102-BALA-OBT2B

Clamp Base:
5102-BALA-OCM2B

LIST PRICE

\$755

Finish

Powder Coat: Classic Black

Details

- Organic, graceful form
- Option of clamp or bolt-thru mounting base
- Integrated cable management
- Dynamic motion technology for perfect movement and balance
- Quick release VESA plate
- Rotation limiter, dynamic motion technology
- Sliders available for use with large monitors
- Rotate monitor for landscape or portrait view

Arm

Height: 18.62" fully extended
Width: 33.35"
Depth: 20.12" fully extended

Base

Base Width: 5.93"
Base Depth: 5.12"

Extended Arm Reach From Desk Edge

20.11"

Vertical Arm Adjustment Range

9.92"

Monitor Pivot Range

Tilt +/80°, Swivel +/90°,
360° Monitor Rotation with
180° stop lock adjustment

Monitor Weight Supported

6-19.8 lbs each arm

Monitor Size Supported

Up to 32" without additional slider

VESA Compliant

75mm, 100mm

Shipping Box

20" x 14.2" x 6.7"

Shipping Product Weight

16.06 lbs

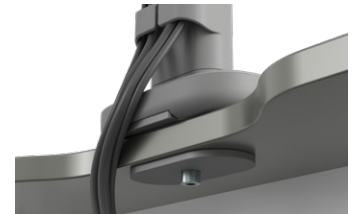
Product Warranty

12 Years

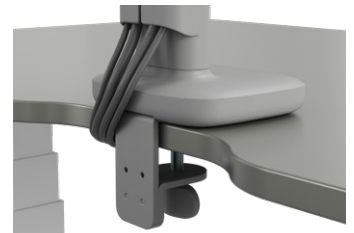
Product Certificates and Testing Standards

Intertek Clean Air Gold
BIFMA Compliant
BIFMA X5.5

Form Furniture ©2023 All Rights Reserved.



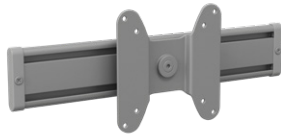
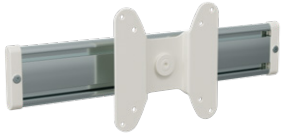
Bolt-Thru Base



Clamp Base

BALANCING ACT

Slider



Perfect White
5201-BALA-0000W

Grey Silver
5201-BALA-0000G

Classic Black
5201-BALA-0000B

LIST PRICE
\$115

LIST PRICE
\$115

LIST PRICE
\$115

Finish
Powder Coat: Perfect White

Finish
Powder Coat: Grey Silver

Finish
Powder Coat: Classic Black

Details

- Quick release
- Aluminum construction
- 9" of lateral adjustment
- Available in Perfect White, Grey and Black
- VESA Compatible, 75mm, 100mm

Slider
Height: 2.165"
Height with VESA plate: 4.57"
Width: 11.92"

Slider Range
9"

VESA Compliant
75mm, 100mm

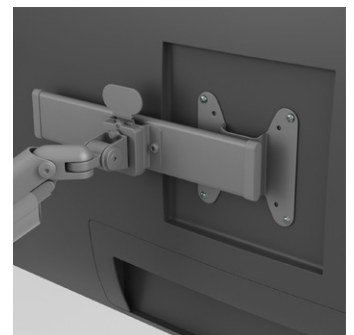
Shipping Box
13.78" x 7.28" x 4.3"

Shipping Product Weight
3 lbs

Product Warranty
12 Years

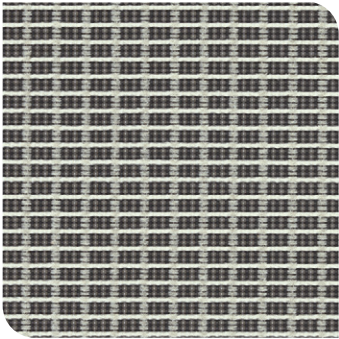
Product Certificates and Testing Standards
Intertek Clean Air Gold
BIFMA Compliant
BIFMA X5.5

Form Furniture ©2023 All Rights Reserved.

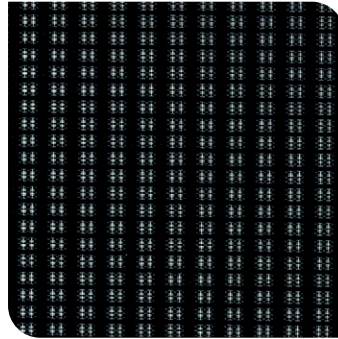


FINISH LIBRARY

TEXTILES



Grey Mesh



Black Mesh

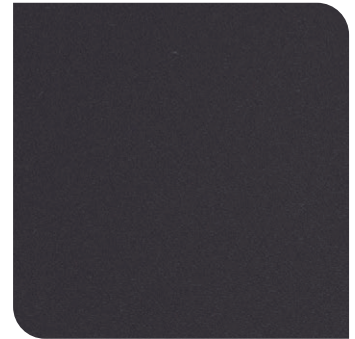
MESH TEXTILES

Abrasion Resistance
 Martindale 100,000 cycles*
 *Abrasion test results exceeding ACT Performance Guidelines are not an indicator of product lifespan. Multiple factors affect fabric durability and appearance retention.

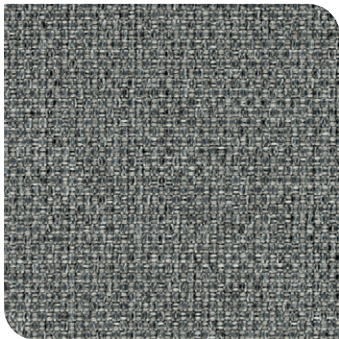
Flammability
 Cal TB 117-2013
 NFPA 260 Class 1



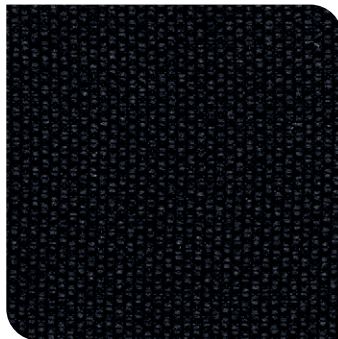
*ACT® Registered Certification Marks



Graphite Micro-Leather



Grey Woven



Black Woven

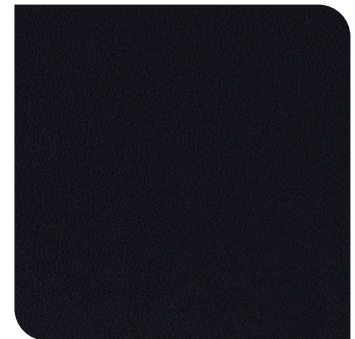
WOVEN TEXTILES

Abrasion Resistance
 Martindale 90,000 cycles*
 *Abrasion test results exceeding ACT Performance Guidelines are not an indicator of product lifespan. Multiple factors affect fabric durability and appearance retention.

Flammability
 Cal TB 117-2013
 NFPA 260 Class 1



*ACT® Registered Certification Marks



Black Micro-Leather



Grey-Beige Micro-Leather



Brown Micro-Leather



Grey-Brown Micro-Leather

MICRO-LEATHER TEXTILES

Abrasion Resistance
 Martindale 100,000 cycles*
 *Abrasion test results exceeding ACT Performance Guidelines are not an indicator of product lifespan. Multiple factors affect fabric durability and appearance retention.

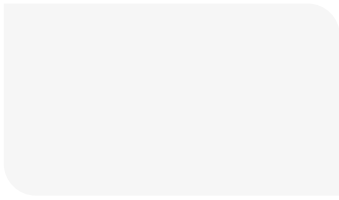
Flammability
 Cal TB 117-2013
 NFPA 260 Class 1



*ACT® Registered Certification Marks

FINISH LIBRARY

POWDER COATS



Classic White



Perfect White



Classic Silver



Grey Silver



Warm Silver



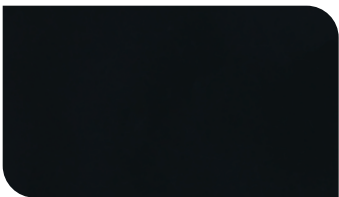
Grey-Beige



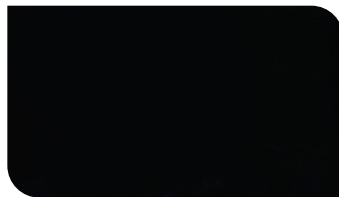
Grey-Green



Red-Brown



Graphite



Classic Black

LAMINATES



Grey Elm



Walnut



Graphite Ash

CARE AND MAINTENANCE

Textiles

Vacuum fabric as needed using an upholstery attachment to remove dust or dirt. Do not use a fabric brush or rotary brush attachment.

Dry-clean or spot clean with solvent cleaner if further cleaning is required.

Leather

Dust with a dry or slightly damp lint free cloth. Gently wipe with a damp sponge with special detergent and then dry with a lint-free cloth. Avoid leaving leather in direct sunlight for long periods of time.

Metal Surfaces

Aluminum surfaces should be cleaned with a dry cloth or nonferrous metal detergents.

Powder coat metal surfaces should be cleaned with a damp cloth and dried with a lint-free cloth. A water-dampened cloth and mild, non-detergent soap can also be used. Rinse with a water-dampened cloth and dry thoroughly.

Plastic Surfaces

Clean plastic surfaces with a water-dampened cloth. Dry thoroughly with a lint-free cloth.

Laminate Surfaces

Use a damp cloth or sponge and a mild soap or detergent. Rinse thoroughly with warm water and wipe dry.

Please refer to the Wilsonart website for cleaning instructions to clean specific types of stains:
https://www.wilsonart.com/media/Technical_Resources/en/hpl_cm.pdf

PRODUCT TESTING AND SUSTAINABILITY

PRODUCT	BIFMA X5.1-2017 (TYPE I, III)	BIFMA X5.5-2021	BIFMA X5.9-2019	BIFMA X5.4	ANSI/BIFMA M7.1-2011 (R2016)	ANSI/BIFMA X7.1-2011 (R2016)	ANSI/BIFMA E3-2019 (7.6.1,7.6.2, 7.6.3)	GREEN GUARD UL 2818	INTERTEK CLEAN AIR GOLD	INDOOR AIR QUALITY/ ADVANTAGE GOLD (SCS Global)	WEIGHT CAPACITY (LBS)	WARRANTY
At Work Task Chair with Headrest (Upholstered Back)	✓	N/A	N/A	N/A	✓	✓	✓	✓			300	12 yrs comp./ 5 yrs textiles
At Work Task Chair (Mesh Back)	✓	N/A	N/A	N/A	✓	✓	✓	✓			300	12 yrs comp./ 5 yrs textiles
At Work Task Chair (Upholstered Back)	✓	N/A	N/A	N/A	✓	✓	✓	✓			300	12 yrs comp./ 5 yrs textiles
On Board High Back Conference Chair	✓	N/A	N/A	N/A	✓	✓	✓	✓			300	12 yrs comp./ 5 yrs textiles
On Board Mid Back Conference Chair	✓	N/A	N/A	N/A	✓	✓	✓	✓			300	12 yrs comp./ 5 yrs textiles
Balancing Act Monitor Arms (Single, Dual & Slider)	N/A	✓	N/A	N/A	N/A	N/A			✓		6-19.8 per arm	12 yrs
Stash Cart	N/A	N/A	✓	N/A	N/A	N/A			✓			5 yrs
Stash Drawer	N/A	N/A	✓	N/A	N/A	N/A			✓			5 yrs
Stash Tower	N/A	N/A	✓	N/A	N/A	N/A			✓			5 yrs
Clean Slate (Laminate Finish)	N/A	N/A	N/A	N/A	N/A	N/A			✓		N/A	5 yrs
Clean Slate (Powder Coat Finish)	N/A	N/A	N/A	N/A	N/A	N/A			✓		N/A	5 yrs
New Heights Adjustable Table Base	N/A	✓	N/A	N/A	✓	✓	✓		✓		240	10 yrs/ 5 yrs handset
NH Classic C Table Base	N/A	✓	N/A	N/A	✓	✓	✓		✓		240	10 yrs/ 5 yrs handset
NH Classic T Table Base	N/A	✓	N/A	N/A	✓	✓	✓		✓		240	10 yrs/ 5 yrs handset

PRODUCT TESTING AND SUSTAINABILITY

ANSI/BIFMA X5.1-2017(R2022)

General-Purpose Office Chairs – Tests.

Covers general office and institutional seating, side/guest chairs, stacking chairs, tablet armchairs, and stools.

These seating products are generally single seat and may incorporate adjustment features.

ANSI/BIFMA X5.5-2021

Desk and Table Products.

Covers traditional desks and tables, which may also include drawers or other storage features. In addition, this standard includes Benching, Height-Adjustable Tables, Tilt-Top Tables, Keyboard Tables, and Monitor Arms.

ANSI/BIFMA X5.9-2019

Storage Units.

Provides test methods for freestanding, mobile, and wall-mounted storage units.

ANSI/BIFMA X5.4-2020

Public and Lounge Seating.

Covers seating typically found in indoor public spaces such as waiting, reception, visitor seating in patient rooms, restaurant/dining/cafeteria settings and other gathering areas. Public and Lounge seating may also include units with multiple seating positions. Usually, these products have limited adjustment features.

ANSI/BIFMA M7.1-2011 (R2021)

Standard Test Method for Determining VOC Emissions From Office Furniture Systems, Components, and Seating.

This test method is intended for determining volatile organic compound emissions from furniture under environmental and product usage conditions that are typical of those found in buildings.

ANSI/BIFMA X7.1-2011 (R2021)

Standard for Formaldehyde and TVOC Emissions of Low-emitting Office Furniture and Seating.

Specifies acceptance levels that define low-emitting furniture independent of construction materials, manufacturing processes, mechanical designs, or aesthetic designs.

ANSI/BIFMA e3-2019

Furniture Sustainability Standard.

Provides measurable market-based definitions and establishes performance criteria for sustainable furniture. For more information on how the e3 Furniture Sustainability Standard integrates with LEVEL by BIFMA.

GREENGUARD UL 2818

Provides certification for low chemical emission products to help demonstrate both compliance with key chemical emission standards and a commitment to healthier indoor environments.

INTERTEK Clean Air Gold

States conformance to ANSI/BIFMA e3 standard credits 7.6.1, 7.6.2 and/or credit 7.6.3, which includes California Department of Public Health (CDPH) Standard Method v1.2 01350 (2017), as well as conformance to low-emitting materials for WELL and LEED.

Indoor Advantage and Indoor Advantage Gold

This standard aligns with both ANSI/BIFMA M7.1 and X7.1, and CA 01350. It is recognized by the EPA and GSA, and qualifies for many building rating systems, including LEED v4.1, BREEAM, WELL Building, and Living Building Challenge.

BIFMA LEVEL Certification

Third party certification process for evaluating environmentally preferable and socially responsible furniture that contributes to sustainable building ratings. The program offers three performance tiers: LEVEL 1, 2, and 3.

TERMS AND CONDITIONS

Terms & Conditions of Sale

These Terms & Conditions of Sale ("Terms") pertain to and are the only terms that govern all quotations and orders for FORM furniture products from Form Furniture LLC ("FORM"). These Terms and the applicable acknowledgment issued by FORM comprise the entire agreement between FORM and the purchaser described in the acknowledgment, and supersede all prior or contemporaneous understandings, agreements, negotiations, representations, warranties, and communications, whether written or oral.

Orders

Orders must include complete customer contact information including company name, phone number, contact person phone number & email address, bill-to address, and ship-to address with contact name and phone number.

Purchase orders require:

- Purchase order number
- Requested ship date/delivery date
- Quantities
- Complete model number (including textile code, where applicable)
- End user
- Unit price with discount
- PO total
- Acknowledgment email address
- Special instructions

If the purchase order includes appropriate location/tagging information, FORM Furniture will gladly tag furniture items with their intended locations/tagging for ease of installation.

Purchase orders should be sent to:
orders@form-furniture.com

These Terms prevail over any terms contained in any purchase order or general terms and conditions of purchase, and any such additional or different terms are hereby rejected.

Order Acknowledgments

FORM's written acknowledgment indicates acceptance of the placed purchase order and is subject to FORM's Terms. Orders will be acknowledged within 48 hours of receipt of the PO. The acknowledgment is a detailed description of items, prices, shipping information and shipping date. Review the acknowledgment and notify FORM immediately if there are any discrepancies in the acknowledgment.

Prices

Except where otherwise noted in the acknowledgment, all prices are current list at the time the order is placed. Pricing does not include installation, shipping, taxes, or storage. FORM will make every effort to notify customers of any pricing or specifications changes, however, FORM reserves the right to change prices or specifications without notice.

Payment Terms

Standard terms are Net 30 from date of shipment and a 50% deposit is required for standard orders over \$50,000. A 50% non-refundable deposit is required for any order that contains custom product. A service charge of 2% per month, accrued monthly, will be assessed on all past due amounts, and FORM may suspend its delivery of products until all payments have been received in full.

Cancellation and Order Changes

Order changes or cancellations must be made more than 72 hours prior to the acknowledged ship date. Any changes or cancellations made to standard orders within 72 hours of the acknowledged ship date will incur a 15% change/cancellation fee. Additional re-stocking fees may apply. Orders that contain custom product cannot be changed or canceled.

Please contact FORM Customer Service for assistance with any order changes or cancellations.

Contact Customer Service at:
customerservice@form-furniture.com

Shipping & Delivery

Standard shipments are made via common carrier, unless otherwise specified. Standard deliveries are dock-to-dock and are scheduled to occur between Monday-Friday 8a-5p. Title to and risk of loss of the products shall pass to the customer upon delivery. FORM will attempt to accommodate basic shipping instructions (i.e. "call ahead" or "deliver before 12p) as long as that information is included on the order.

Worktops ordered in quantities of 5 or less will incur a \$150 shipping charge. Table bases ordered in quantities of 5 or less will incur a \$50 shipping fee.

Products are thoughtfully inspected, secured, and packaged for shipment; however, FORM is not responsible for delays or failures of delivery when those failures are caused by matters

TERMS AND CONDITIONS

beyond FORM's reasonable control, including by the carrier. If delivery issues are encountered, please contact FORM Customer Service immediately and our team will make every effort to assist in rectifying the issue.

Contact Customer Service at:
customerservice@form-furniture.com

Storage

FORM does not have capacity for storage of products for an extended period. Should a customer be unable to accept to receive the product as originally planned, contact FORM Customer Service and our team will make every effort to assist in helping resolve the issue. Any storage fees that are incurred will be the responsibility of the customer.

Contact Customer Service at:
customerservice@form-furniture.com

Freight Damage

FORM thoughtfully packages, secures, and ships all products, however, we understand that damage to cartons or products can occur during transit. If an order was received with freight damage (concealed or external), please follow these steps for an expedited resolution. FORM will, if notified within sixty (60) days from the date of shipment, as determined by FORM and as the customer's sole remedy and FORM's exclusive liability, repair, replace, or issue a credit for the purchase price of the damaged products.

If damage is visible:

- Accept the shipment and document freight damages on the freight bill
- Take pictures of the damage for claim submission
- Contact FORM Customer Service to report the issue immediately

If damage is concealed:

- Save the product, carton, and inner packaging
- Take pictures of the damage for claim submission
- Contact FORM Customer Service to report the issue **within 60 days** of delivery.

Contact Customer Service at:
customerservice@form-furniture.com

Returns and Refusals

Although FORM does not accept returns, it is important that all of our customers love their FORM Furniture as much as we do. If there is a need to return product, please contact FORM Customer Service.

If a customer needs to refuse a shipment for any reason, please contact FORM Customer Service immediately so we can assist in making appropriate arrangements for the shipment. Refused shipments will incur a 15% restocking fee plus the cost of the return freight, billable to the original customer.

Contact Customer Service at:
customerservice@form-furniture.com

Warranty Coverage

FORM Furniture is committed to the complete satisfaction of our customers with our products and performance. If a problem arises with a FORM Furniture product, please contact our Customer Service team immediately and we will make every effort to rectify the situation.

The original end user of FORM Furniture's product is protected against defects of materials and workmanship for the following warranty periods:

- Seating Components: 12 years
- Seating Textiles & Mesh: 5 years
- Laminate Tabletops: 5 years
- Powder Coated Tabletops: 5 years
- Handset for Height Adjustable Table Base: 5 years
- Height Adjustable Table Bases(not including handset): 10 years
- Monitor Arms: 12 years
- Storage & Storage Accessories: 5 years

The warranty does not cover damage from ordinary wear and tear, or damage resulting from accident, alteration, misuse, abuse, tampering, or negligence.

In the event that the customer notifies FORM prior to the expiration of the applicable warranty period and FORM determines that the applicable products fail to conform to the foregoing warranty, FORM will, at FORM's election and expense, and as the customer's sole remedy and FORM's exclusive liability, repair, replace, or provide a refund of the purchase price of the nonconforming products.

If a problem arises with FORM product outside of the warranty period, contact our Customer Service team.

TERMS AND CONDITIONS

Disclaimer

EXCEPT AS EXPRESSLY SET FORTH ABOVE, FORM DISCLAIMS ALL OTHER WARRANTIES, WHETHER EXPRESS, STATUTORY OR IMPLIED, INCLUDING WITHOUT LIMITATION ANY WARRANTIES OF MERCHANTABILITY, NON-INFRINGEMENT OR FITNESS FOR A PARTICULAR PURPOSE, AND WARRANTIES ARISING FROM TRADE USAGE, COURSE OF DEALING, OR OTHERWISE.

Limitation of Liability

NOTWITHSTANDING ANYTHING TO THE CONTRARY HEREIN; (a) FORM SHALL NOT BE LIABLE FOR LOST PROFITS, REVENUE OR LOSSES DUE TO BUSINESS INTERRUPTIONS, OR ANY INDIRECT, INCIDENTAL, CONSEQUENTIAL, PUNITIVE OR OTHER SPECIAL DAMAGES, HOWEVER THE SAME MAY BE CAUSED, REGARDLESS OF THE FAULT, NEGLIGENCE (WHETHER SOLE, JOINT, CONCURRENT, ACTIVE OR PASSIVE OR OTHERWISE), PRE-EXISTING DEFECT OR STRICT LIABILITY, DIRECTLY OR INDIRECTLY ARISING OUT OF THE PRODUCTS OR THESE TERMS; AND (b) FORM'S ENTIRE LIABILITY, AND THE CUSTOMER'S EXCLUSIVE REMEDY, IN LAW AND EQUITY OR OTHERWISE, WITH RESPECT TO THE PRODUCTS OR THESE TERMS, IS SOLELY LIMITED TO THE AMOUNTS PAID BY THE CUSTOMER TO FORM FOR THE PRODUCTS TO WHICH THE APPLICABLE CLAIM RELATES.

Term and Termination

These Terms shall become effective upon FORM's acceptance of the customer's order and shall remain in force until all products under the applicable order have been delivered, unless earlier terminated as permitted herein. FORM may terminate the customer's order and these Terms immediately by written notice to the customer if the customer fails to pay any amounts when due and fails to cure such non-payment within ten (10) days of receipt of written notice thereof, or if the customer breaches these Terms and fails to cure such breach within thirty (30) days of receipt of written notice thereof.

Miscellaneous

In the exercise of their respective rights, and the performance of their respective obligations, under this Agreement, the parties are, and shall remain, independent contractors. Neither party shall bind, or attempt to bind, the other party hereto to any contract or the performance of any other obligation or represent to any third party that it is authorized to enter into any contract or binding obligation on behalf of the other party hereto. These Terms shall be governed by and construed in accordance with the laws of the State of Alabama, excluding any conflicts or choice of law rule or principle that might otherwise refer construction or interpretation of these Terms to the substantive law of another jurisdiction. Any legal suit, action or proceeding arising out of or related to this Agreement will be instituted exclusively in the federal or state courts serving Jefferson County, Alabama. The U.N. Convention on Contracts for the International Sale of Goods shall not apply to these Terms. The parties specifically waive any right to a jury trial regarding disputes related to these Terms. The customer may not assign the order or these Terms without the prior written consent of FORM. The order and these Terms may not be modified, amended, altered or supplemented except upon the execution and delivery of a written agreement executed by an authorized representative of each of the parties. If any provision of these Terms is held to be illegal, invalid or unenforceable under any applicable laws, such provision shall be fully severable, these Terms shall be construed and enforced as if such illegal, invalid or unenforceable provision had never comprised a part hereof, and the remaining provisions of these Terms shall remain in full force and effect and shall not be affected by the illegal, invalid or unenforceable provision or by its severance herefrom. No waiver by a party of the provisions hereof will be effective unless explicitly set forth in writing and signed by the party so waiving. No failure to exercise, or delay in exercising, any rights or remedies arising from these Terms will operate or be construed as a waiver thereof. No single or partial exercise of any right or remedy arising from these Terms will preclude any other or further exercise thereof or the exercise of any other right, remedy power or privilege. Provisions of these Terms which by their nature should apply beyond their terms will remain in force after any termination or expiration, including without limitation the Sections entitled Warranty Coverage, Disclaimer, Limitation of Liability and Miscellaneous.



Form: When You Work. Where You Work. How You Work.

formfurniture

WWW.FORM-FURNITURE.COM