

# WORK



Tables

**form**

FURNITURE MADE SIMPLE®



## New Heights Table Kits



Perfect White Worktop  
Grey Silver Table Base



Walnut Worktop  
Perfect White Table Base



Grey Elm Worktop  
Graphite Table Base

## New Heights Table Bases



Perfect White



Grey Silver



Warm Silver



Graphite

## New Heights Classic Table Bases



Classic White



Classic Silver



Classic Black

## Clean Slate Worktops



Perfect White Powder Coat



Grey-Beige Powder Coat



Grey Elm Laminate

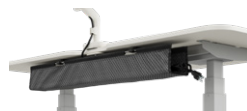


Walnut Laminate



Graphite Ash Laminate

## Clean Slate Cable Caddy



Grey



Black

New Heights Table Base



## NEW HEIGHTS TABLE BASE

We've all heard it...sitting all day is bad for your health. Height adjustable tables make it easier than ever to move at work. Form's stylish New Heights line of sit-to-stand table bases give you all the movement and function you want without the confusing options and upgrades you don't. We offer the best options at the best price. Our bases are durable, easy to assemble, and work great with any work surface...they're even better when paired with our Clean Slate Worktops.

### Features

- Light weight
- Pre-assembled for easy installation
- 240lb lifting capacity
- Adjustable width: 39.38-70.87"
- Adjustable height: 23-48.66"
- Manufactured in Europe using renewable electricity from sustainable energy sources
- Anti-collision technology
- 10-year warranty (not including handset)  
5-year warranty for handset and electronics
- Three-stage, C-leg configuration
- Simple, easy to use controls
- Product Certificates and Testing Standards: SCS Indoor Advantage Gold, Intertek Clean Air Gold, BIFMA Compliant



New Heights Table Base







New Heights Classic Table Base





## NEW HEIGHTS CLASSIC TABLE BASE

We've all heard it... sitting all day is bad for your health. Height adjustable tables make it easier than ever to move at work. Form's stylish New Heights line of sit-to-stand table bases give you all the movement and function you want without the confusing options and upgrades you don't. And our New Heights Classic range provides even more great options at a great price. Our bases are durable, easy to assemble, and work great with any work surface... they're even better when paired with our Clean Slate Worktops.

### Features

- Quickship / In Stock
- Light weight
- Easy installation
- 220lb lifting capacity
- 24" and 30" deep options available
- Adjustable width: 40.7-68.3"
- Adjustable height: 22.9-49"
- Anti-collision technology
- 10-year warranty (not including handset)  
5-year warranty for handset and electronics
- Three-stage, T-leg configuration
- Memory controller
- Product Certificates and Testing  
Standards: SCS Indoor Advantage Gold,  
Intertek Clean Air Gold, BIFMA Compliant





## CLEAN SLATE WORKTOP

Start every day on a Clean Slate. Form's durable work surfaces are designed with soft, modern lines in a simple range of stylish and durable finishes—perfect for any workspace.

### Features

#### HIGH PRESSURE LAMINATE

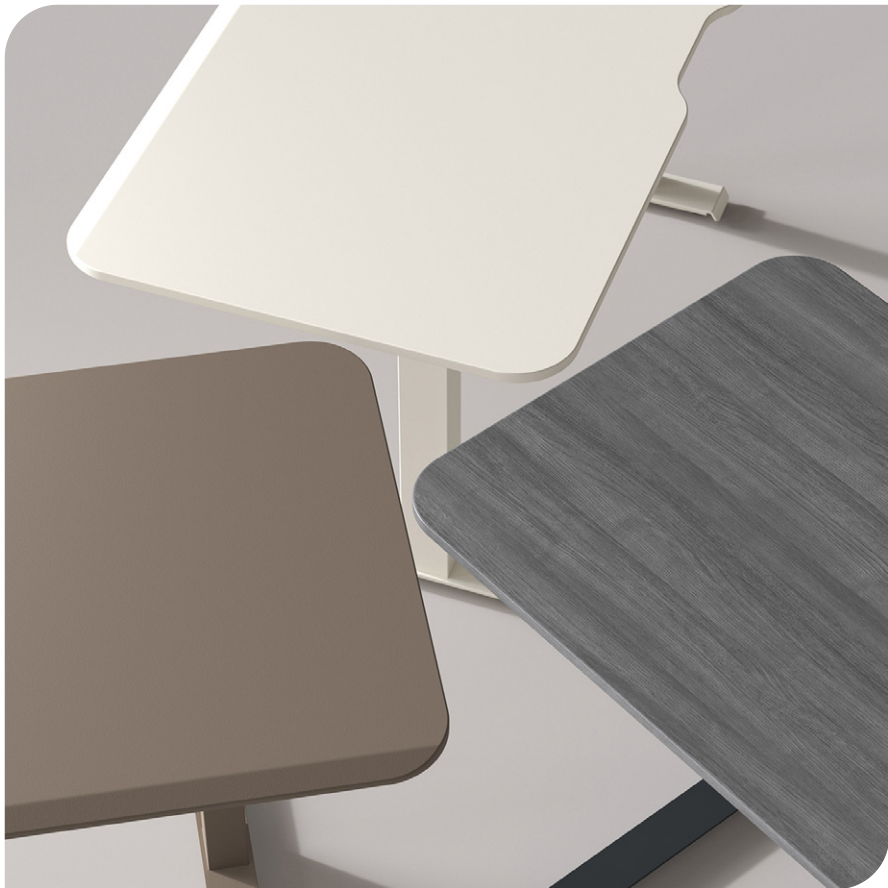
- Premium wood grain patterns
- Durable high-pressure laminate
- 5-year warranty
- Worktop thickness: 1" nominal (0.83")
- Sizes: 30" x 60", 66", & 72"  
24" x 60", 66", & 72"  
\*Nominal sizes
- Product Certificates and Testing Standards:  
Intertek Clean Air Gold, BIFMA Compliant

#### POWDER COATED FINISH

- Smooth durable finish
- 5-year warranty
- Comfort edge
- Worktop thickness: 1" nominal (0.83")
- Sizes: 30" x 60", 66", & 72"  
24" x 60", 66", & 72"  
\*Nominal sizes
- Product Certificates and Testing Standards:  
SCS Indoor Advantage Gold, Intertek Clean Air  
Gold, BIFMA Compliant



Clean Slate Worktops







## CLEAN SLATE CABLE CADDY

Streamline your workspace with simple and accessible cable management. Say goodbye to messy wires with Cable Caddy's flexible mesh housing that easily mounts beneath the desk. Adjustable straps keep everything in place, creating a central hub for your power cables.

### Features

- Organizes cable clutter and removes tripping hazards
- Unfolds for easy access to cables
- Six straps keep cords in place when adjusting your desk
- Easy installation with 2 brackets and mounting template included





A grayscale photograph of a woman sitting on a modern, minimalist table. She is wearing a dark top, dark trousers, and dark flat shoes. Her right hand rests on her lap, and her left hand rests on the table surface. The table has a light-colored top and a dark, thick, rectangular base. The background is a plain, light color.

**Form: When You Work. Where You Work. How You Work.**

**form**furniture

[WWW.FORM-FURNITURE.COM](http://WWW.FORM-FURNITURE.COM)